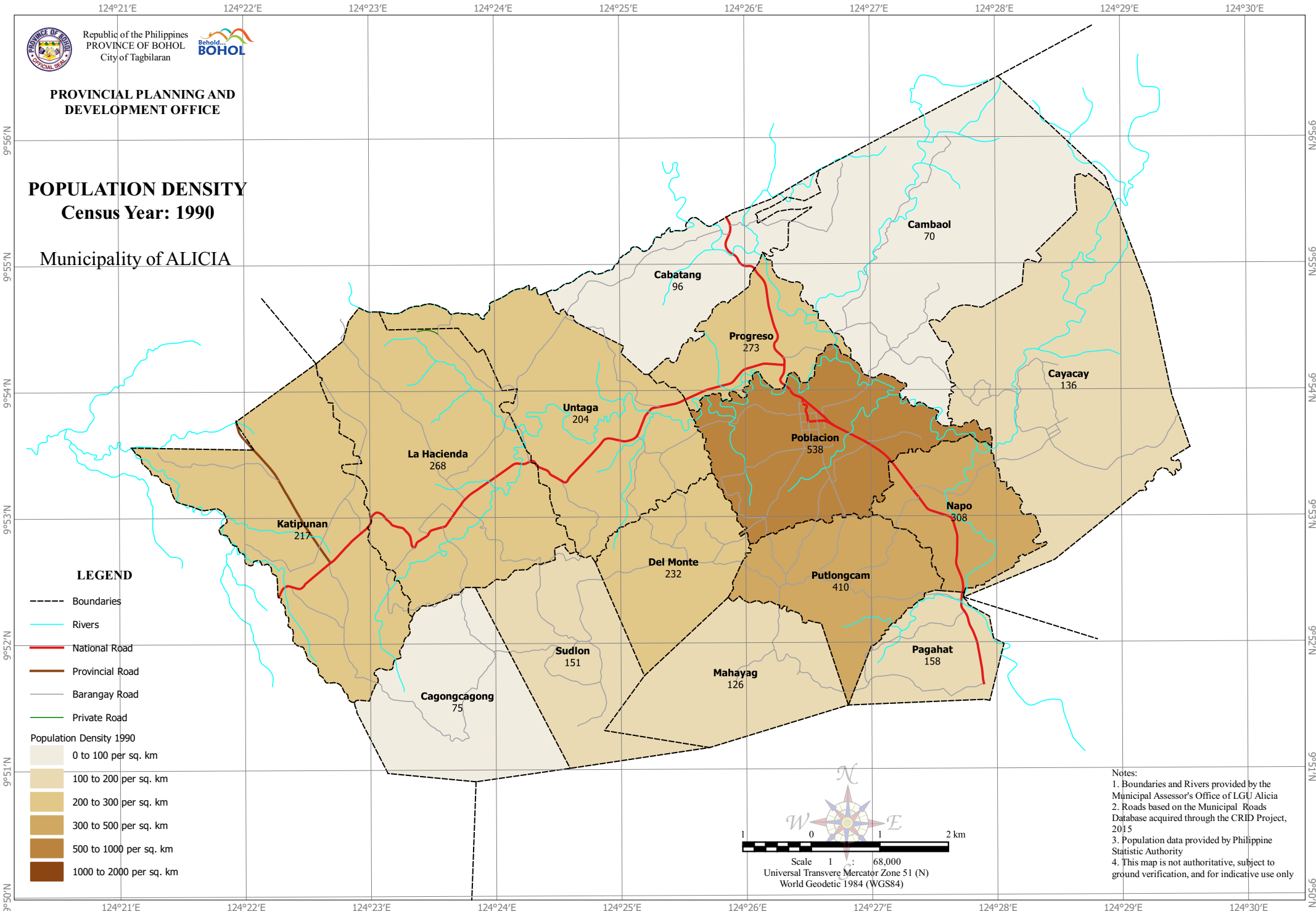




**PROVINCIAL PLANNING AND
 DEVELOPMENT OFFICE**

**POPULATION DENSITY
 Census Year: 1990**

Municipality of ALICIA



LEGEND

- Boundaries
- Rivers
- National Road
- Provincial Road
- Barangay Road
- Private Road

- Population Density 1990
- 0 to 100 per sq. km
 - 100 to 200 per sq. km
 - 200 to 300 per sq. km
 - 300 to 500 per sq. km
 - 500 to 1000 per sq. km
 - 1000 to 2000 per sq. km

Scale 1 : 68,000
 Universal Transverse Mercator Zone 51 (N)
 World Geodetic 1984 (WGS84)

Notes:
 1. Boundaries and Rivers provided by the Municipal Assessor's Office of LGU Alicia
 2. Roads based on the Municipal Roads Database acquired through the CRID Project, 2015
 3. Population data provided by Philippine Statistic Authority
 4. This map is not authoritative, subject to ground verification, and for indicative use only